



MMV1630

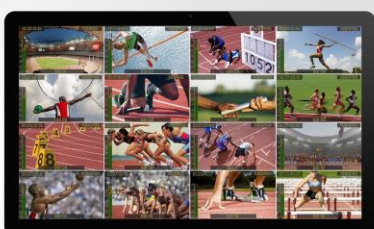
Model No.

1RU 16-CH 3G-SDI MULTIVIEWER & 16x16 3G-SDI MATRIX SWITCHER

- ▶ Dual modes: 16-CH multiviewer and 16x16 matrix switcher
- ▶ 16xSD/HD/3G-SDI auto-detected inputs
- ▶ 2xSDI & 1xHDMI multiview scaling outputs with audio
- ▶ Full screen, and 20 preset multiview layouts with clock display
- ▶ Time code, UMD, signal status and audio meter overlay
- ▶ Front panel buttons and knob control with led display
- ▶ Free PC control software via LAN port
- ▶ Dual power design, redundant power

Mode 1 16-Channel Multiviewer

MMV1630 is default as a 16-CH multiviewer, and it is perfect for large installations because all 16 independent 3G-SDI inputs signals output as a multiview signal with audio, then you only need a single display to monitor all input signals simultaneously. The video format of multiview output can be selected from total 9 formats from 720p to 1080p. Besides, 20 standard layouts with 16/12/11/10/9/8/6/4 preset in this device. You can even SOLO any input signal in full screen through the shortcut key.



1 Signal Status

Signal status overlay conveniently displays the SDI input signal status of each window.

2 Audio Meter

Each window has a 2-channel audio meter overlay for monitoring the audio status, and you can choose 2 out of 16-channel embedded audio from SDI input signal.

3 UMD Overlay

In each individual window, user can create custom UMD overlays up to 11 characters to indicate and mark the signal source information.

4 Time Code

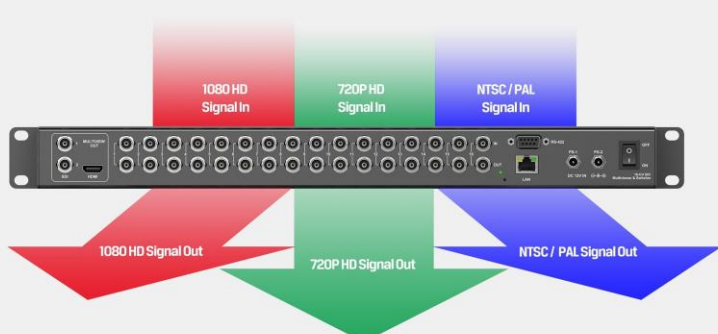
Each window displays an independent time code of SDI input signal.

Overlays

Each window is a completely independent video monitor with overlays that you can turn on and off. For example, signal status, audio meters, UMD and time code.

Mode 2 16x16 Matrix Switcher

MMV1630 can be quickly configured to a 16x16 SDI matrix switcher mode by the menu setting. Under matrix switcher mode, it is compatible with multiple format signal inputs in different resolutions and frame rates with auto detection technology.



Control Methods

MMV1630 is coming with a full control panel that almost all functions can be set through this panel via the dedicated buttons, menu knob and 2.2" LCD screen. And with the free PC software via Ethernet, user can control it on a windows PC conveniently.

Compact Design & Redundant Power

The use of premium components coupled with dual redundant power supplies ensures device works fine even when the mainpower supply encounters problems. And the super-compact 1RU design making a perfect fit for any live broadcast or post production, such as OB vans, broadcast control rooms and studios.



TECHNICAL SPECIFICATION

MULTIVEWUER MODE	Inputs	SD/HD/3G-SDI×16
	Loop Outputs	SD/HD/3G-SDI×16
	Outputs	SDI×2, HDMI×1
	SDI Input Format Support	1920×1080p 60/59.94/50/30/29.97/25/24/23.98 1920×1080PsF 30/29.97/25/24/23.98 1920×1080i 60/59.94/50 1280×720p 60/59.94/50/30/29.97/25/24/23.98 625i 50 PAL, 525i 59.94 NTSC
	SDI/HDMI Outputs Format	1080p 60/50/30/25/24 1080i 60/50 720p 60/50
	SDI Auto Switching	Auto selects SD, HD and 3G-SDI on input
SWITCHER MODE	SDI Video Rate	SD/HD/3G-SDI
	SDI Compliance	SMPTE 259M, SMPTE 292M, SMPTE 296M SMPTE 372M, SMPTE 424M
	Color Space and Precision	YUV 4:2:2/YUV 4:4:4/RGB 4:4:4 (SDI input) YUV 4:2:2 (Multiview HDMI/SDI output)
	Inputs	SD/HD/3G-SDI/DVB-ASI×16
	Outputs	SD/HD/3G-SDI/DVB-ASI×16
	SDI Format Support	2048×1080p 30/29.97/25/24/23.98 2048×1080PsF 30/29.97/25/24/23.98 1920×1080p 60/59.94/50/30/29.97/25/24/23.98 1920×1080PsF 30/29.97/25/24/23.98 1920×1080i 60/59.94/50 1280×720p 60/59.94/50/30/29.97/25/24/23.98 625i 50 PAL, 525i 59.94 NTSC
CONTROLS	SDI Auto Switching	Auto selects SD, HD and 3G-SDI on input
	SDI Video Rate	SD/HD/3G-SDI
	SDI Compliance	SMPTE 259M, SMPTE 292M, SMPTE 296M, SMPTE 352M SMPTE 372M, SMPTE 424M, SMPTE 425M, DVB-ASI
	Color Space and Precision	YUV 4:2:2/YUV 4:4:4/RGB 4:4:4/XYZ 4:4:4
POWER	Control	Front panel buttons and knob control LAN (Software control and update) RS-422 (Software control)
	Power Connector	Threaded locking connector
ENVIRONMENT	Voltage Range	DC 12~20V
	Power Supply	PS-1, PS-2, power redundancy
SIZE	Power Consumption	36W
	Operating Temperature	0°C~60°C
PACKING	Storage Temperature	-30°C~70°C
	Relative Humidity	0%~90% non-condensing
WARRANTY	Size	Standard 19" 1 rack unit
	Weight	2kg
	What's Included	1RU 16 Channel 3G-SDI Multiviewer with Switcher DC 12V 5A power adapter 3 year limited warranty

